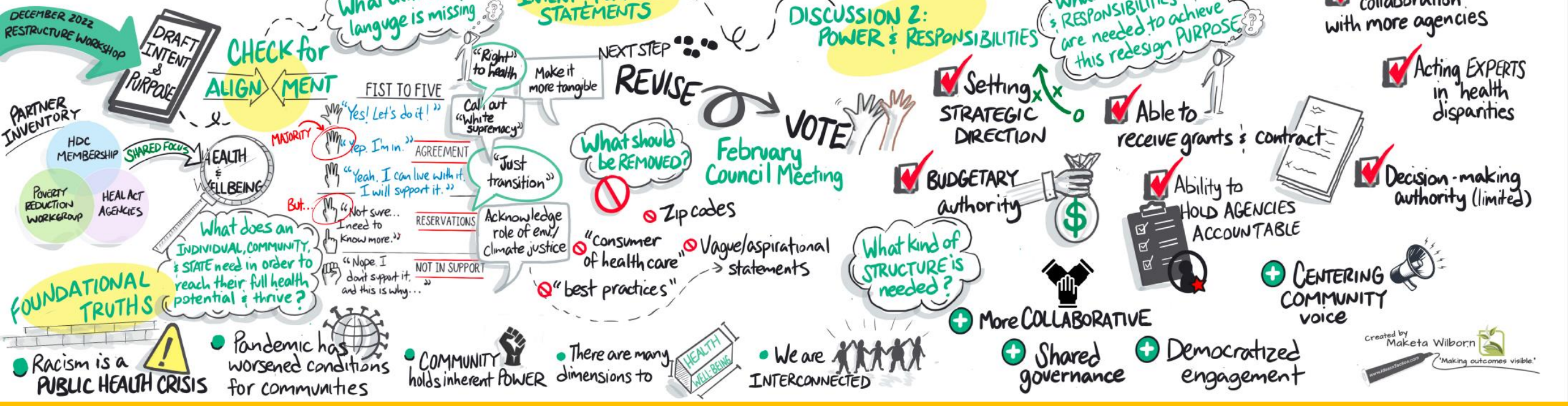


VALUES INSPIRING OUR WORK  
 ACCOUNTABILITY RESPECT INNOVATION SHARED GOVERNANCE HEALING DETERMINATION EMPOWERMENT  
 DETERMINATION LIBERATION TRANSFORMATION



## Our Learnings So Far

- There are foundational truths guiding the redesign:**
- Racism is a public health crisis.
  - The COVID-19 pandemic has worsened conditions for communities.
  - Community holds inherent power, and we must be led by that power.
  - There are many dimensions to health and wellbeing, and health looks different for each person and community.
  - We are interconnected with each other and with the lands, water, and animals.

There is a unique opportunity for the Council to support partners and provide leadership by creating a unifying **statewide vision for health and wellbeing**. For example: What does an individual, community, and state need in order to reach their full health potential and thrive?

## What do you think?

- How should we think about health: as an opportunity, a right, or something else?
- Are we effectively changing the narrative around health in ways that align with our vision of equity and racial justice?
- How should the Council be structured to co-create with community?

## Let's connect!

- Participate in redesign conversations at our [February 16 public meeting](#).
- Submit public comment to [healthequity@sboh.wa.gov](mailto:healthequity@sboh.wa.gov).
- [Contact Council staff](#) to discuss opportunities for partnership.
- [Subscribe to our distribution list](#) to receive meeting agendas and notices.