



PARTNER INVENTORY

JANUARY 25, 2023





Draft Inventory

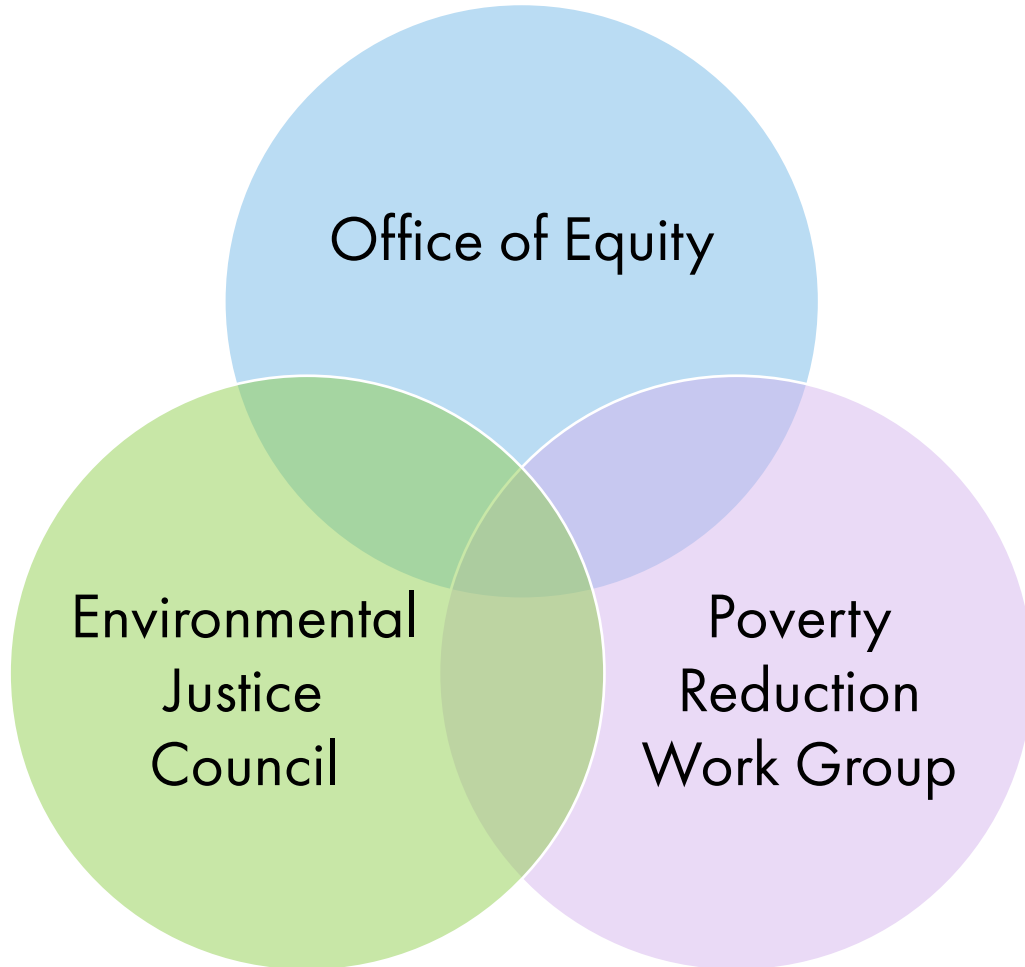
Describes the authority, structure, and focus areas of key partners in government.

See [workshop materials](#).

- Health Disparities Council (HDC)
- Poverty Reduction Work Group (PRWG)
- Office of Equity
- Environmental Justice Council (EJC)
- LGBTQ Commission
- Commission on African American Affairs (CAAA)
- Commission on Asian Pacific American Affairs (CAPAA)
- Commission on Hispanic Affairs) (CHA)



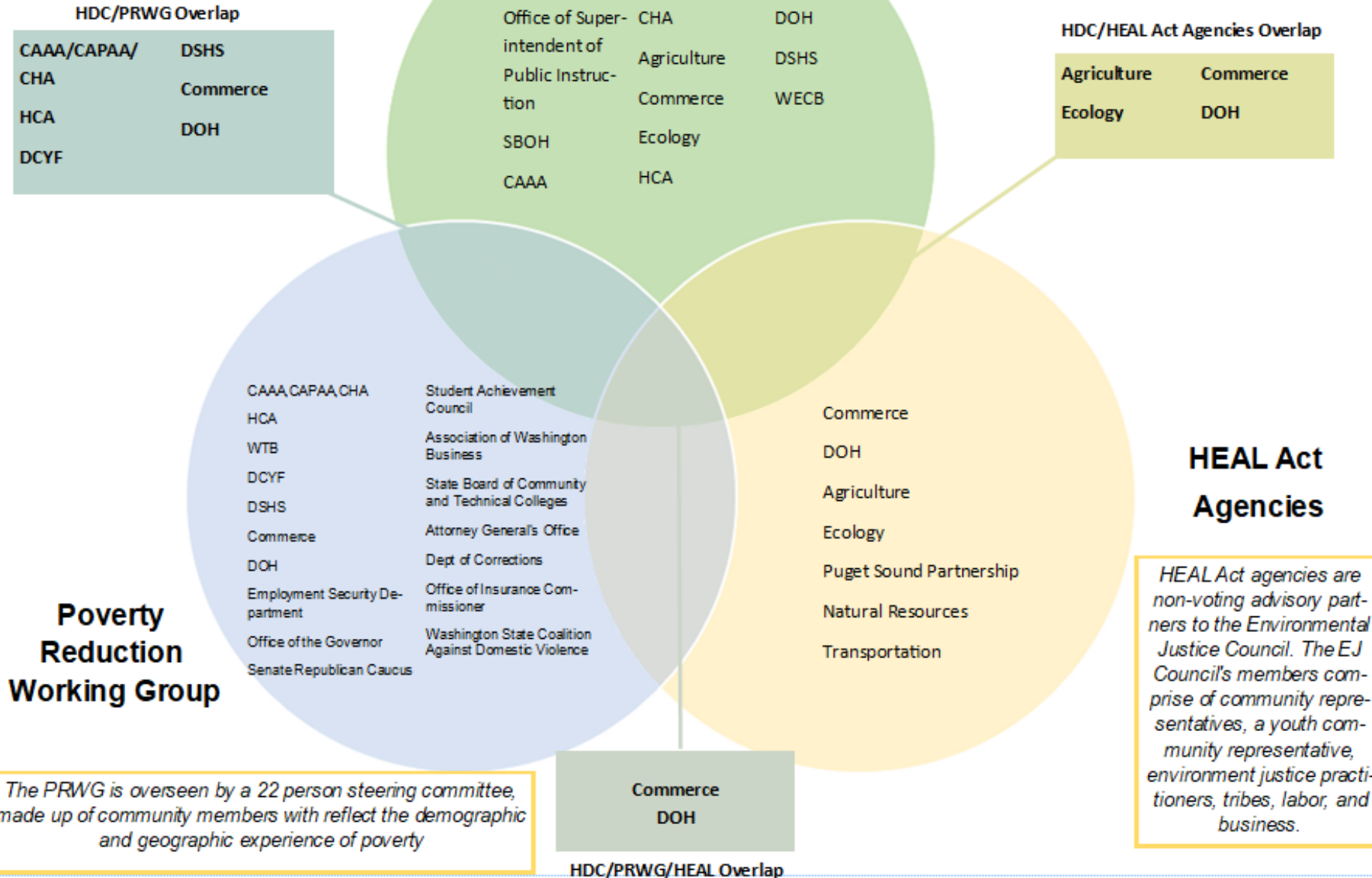
Unified Objectives



- **Center community voice and power**
- **Address racism and oppression**
- **Guide strategy**
 - Create statewide policies and plans
 - Inform agency strategic plans
- **Support interagency coordination**
- **Enhance accountability**
 - Develop assessment tools
 - Measure progress with disaggregated data

State Government Participation

HDC Membership





Shared Focus: Health and Wellbeing

- Individual, family, community, state wellbeing
- Wholeness: holistic health, dimensions of wellbeing
- Interconnectedness with environment, nature, animals, land
- Unique needs of each person and each community
- Social determinants of health
- Access to resources, power, wealth
- Prevent harm in the first place
- Promote healing
- Strong and sustainable communities



System need: A unifying vision for health and wellbeing to guide various initiatives.

What does an individual, community, and state need in order to reach their full health potential and thrive?



•••

THANK YOU



To request this document in an alternate format, please contact Kelie Kahler, Washington State Board of Health Communication Manager, at 360-236-4102, or by email at kelie.kahler@sboh.wa.gov. TTY users can dial 711.