



RCO Mapping Apps and Health Disparity Map

Presented by Adam Cole, Policy Specialist



WASHINGTON STATE
Recreation and Conservation
Funding Board



Recreation and Conservation Office

- Create state recreation strategies, plans.
- Studies
- Serve as a repository of recreation information
- Administer recreation grants



Competitive Grants

Evaluation Criteria

Local Parks Category

Local parks provide property or facilities for active (high impact) or passive (low impact) outdoor recreation. They may contain both upland and water-oriented elements.

Local Parks Criteria Summary

Scored By	#	Title	Project Type Questions	Maximum Points	Focus*
Advisory Committee	1	Public Need	All	15	State, Local
Advisory Committee	2	Project Scope	All	15	Local
Advisory Committee	3	Immediacy of Threat	Acquisition Combination	10 5	Local
Advisory Committee	4	Project Design	Development Combination	15 7.5	Technical
Advisory Committee	5	Sustainability and Environmental Stewardship	All	10	State
Advisory Committee	6	Site Suitability	Acquisition Combination	5 2.5	Technical
Advisory Committee	7	Expansion/Renovation	All	5	Local
Advisory Committee	8	Project Support	All	10	State, Local
Advisory Committee	9	Cost Efficiencies	All	5	State, Local
RCO Staff	10	Growth Management Act Preference	All	0	State
RCO Staff	11	Population Proximity	All	3	State
Total Points Possible=78					

Demographic Measures for Underserved Populations

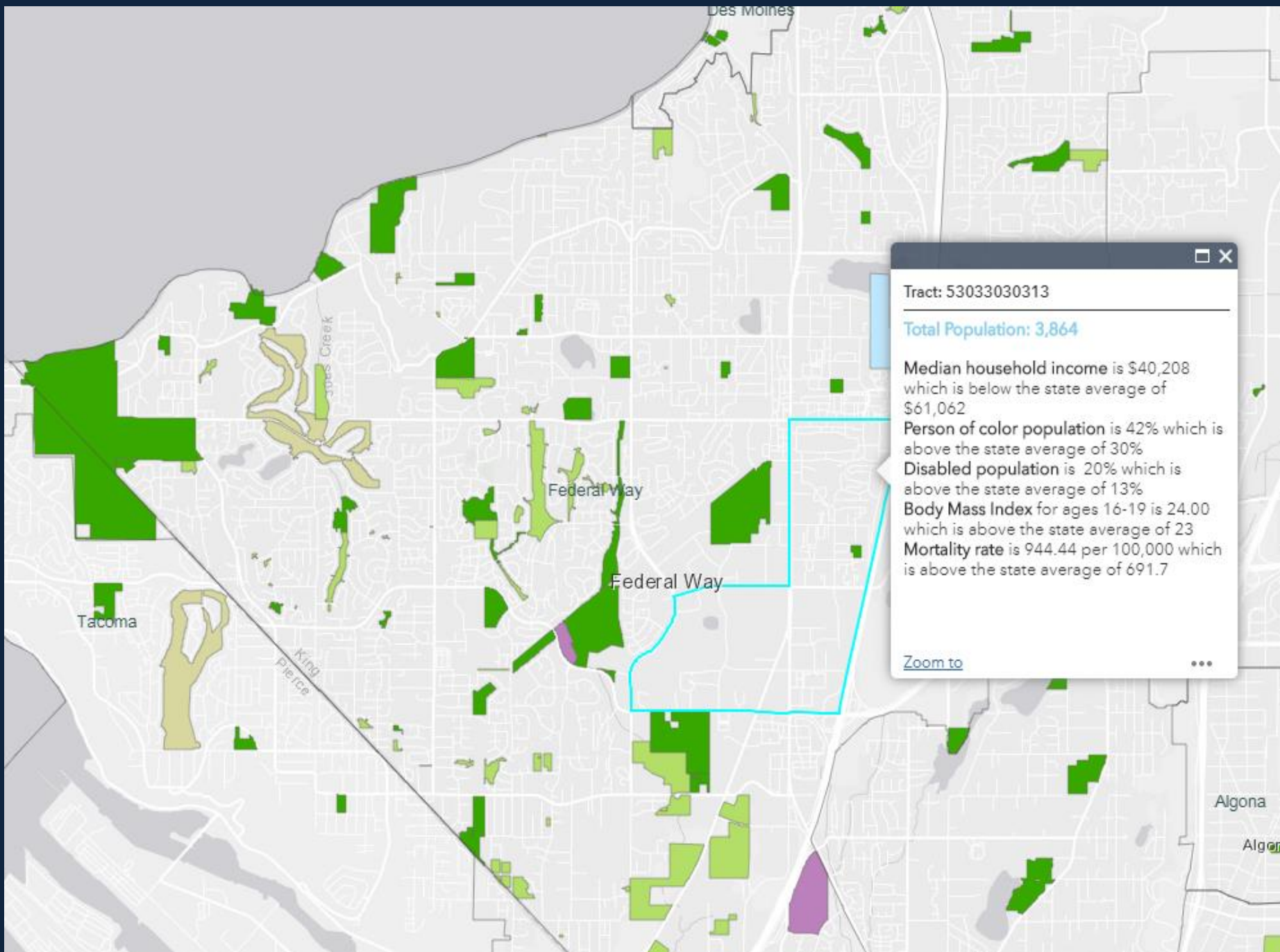
- The median household income level in the census tract where the project is located is below the median statewide household income level (\$61,062 as of 2015).
- Based on percentage, there are more people of color in the census tract where the project is located than the statewide percentage (30 percent as of 2015).
- Based on percentage, there are more people with a disability in the census tract where the project is located than the statewide percentage (13 percent as of 2015).

Opportunities for Health Improvements

- The body mass index for ages 16-19 in the census tract where the project is located is higher than the state body mass index (22.94 as of 2015).
- The mortality rate in the census tract where the project is located is higher than the statewide mortality rate (692 as of 2015).

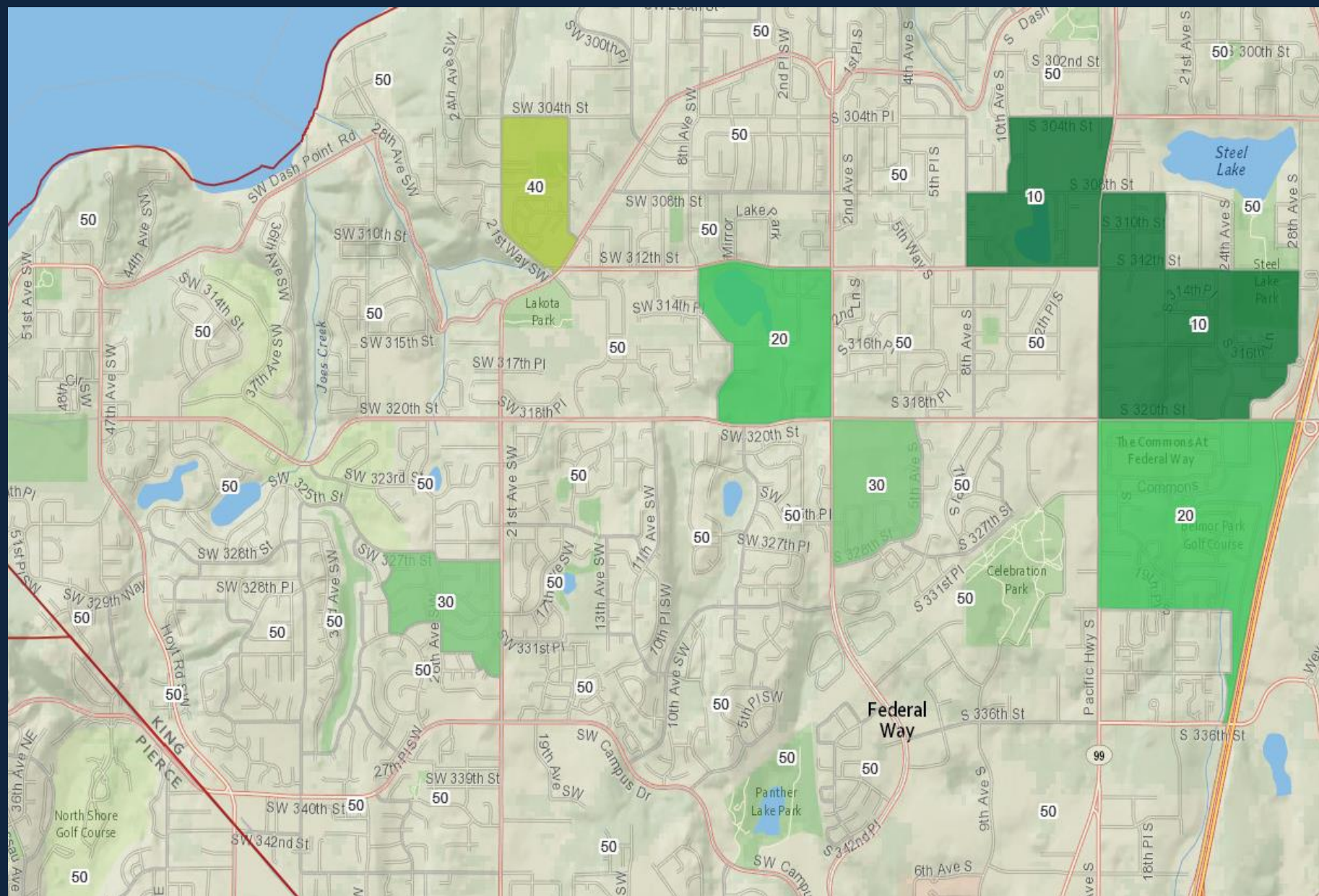
▲ Point Range: 0-5 points, which are multiplied later by 3

“Application Data Tool”

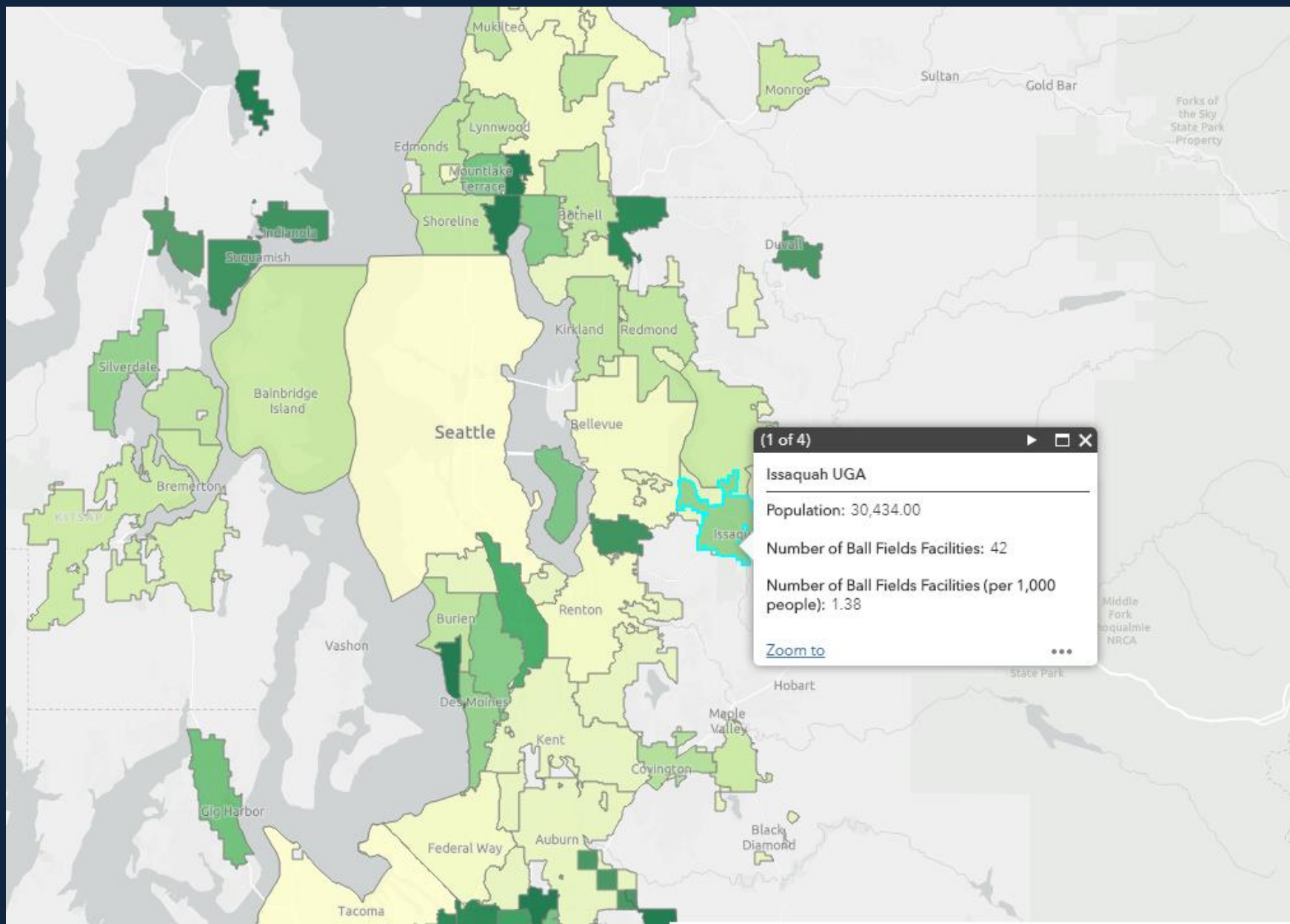


Match Reduction Policy Development

- Necessitated by Legislative Change
 - What is “Underserved?”
 - Looked at WA Dept of Health WTN and IBL Maps
 - Considered Multiple Measures of Health Outcomes and Determinants of Health
 - Considered Using IBL Level of Risk
 - Chose 3 Different Geographies
 - Block Group
 - Town/City
 - County
-



Recreational Assets of State-wide Significance Study



Questions