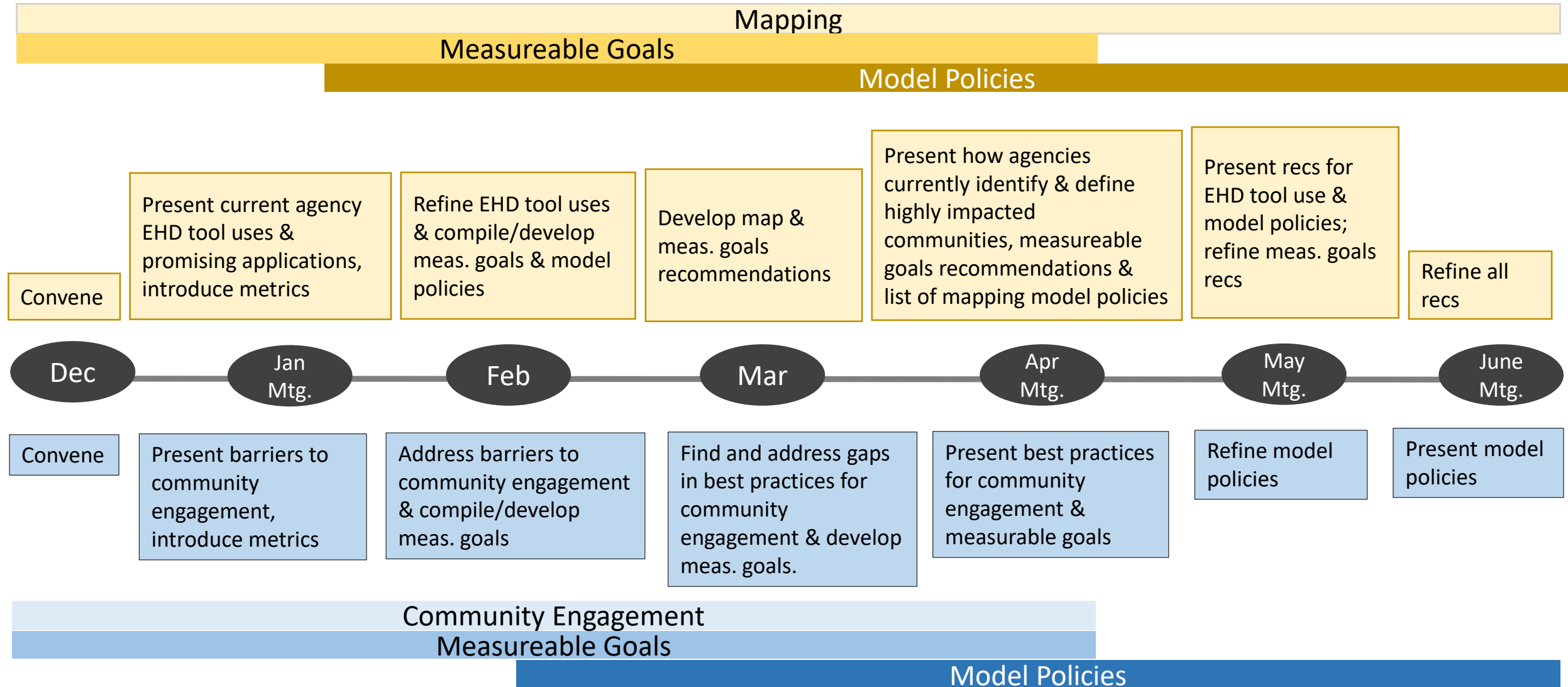


# Mapping & Community Engagement Subcommittee Process & Deliverables

Outcomes	EHD Tool (Environmental Health Disparities Tool)	Community Engagement	Measureable Goals	Model Policies
Mapping	<p><b>Process:</b> Identify promising applications of the EHD tool &amp; examine how agencies currently define/identify highly impacted communities &amp; how this info is used to inform decision making.</p> <p><b>Deliverables:</b> Guidance on how state agencies can use the EHD tool <b>(May Mtg)</b>.</p>	N/A	<p><b>Process:</b> Research existing measures and metrics used in agencies to measure progress toward eliminating environmental health disparities.</p> <p><b>Deliverables:</b> Recommendations on measureable goals to reduce environmental health disparities (as informed by the EHD tool) <b>(April Mtg)</b>.</p>	<p><b>Process:</b> Research model policies &amp; synthesize and/or develop recommended policies or protocols that direct the use of mapping to address EJ &amp; health disparities.</p> <p><b>Deliverables:</b> Recommendations on model policy for prioritizing highly impacted communities to reduce health disparities (as informed by the EHD tool) <b>(May Mtg)</b>.</p>
Community Eng.	N/A	<p><b>Process:</b> Develop recommendations to address barriers to meaningful engagement.</p> <p><b>Deliverables:</b> List of best practices and associated barriers, organized into subject areas <b>(April Mtg)</b>.</p>	<p><b>Process:</b> Research approaches to evaluating community engagement, identify gaps, and develop new recommendations.</p> <p><b>Deliverables:</b> List of recommended measurable goals and evaluation tools <b>(April Mtg)</b>.</p>	<p><b>Process:</b> Research model policies &amp; synthesize and/or develop recommended policy in response to research.</p> <p><b>Deliverables:</b> Present collected elements of established policies &amp; new policy recommendations <b>(May/June Mtg)</b>.</p>

# Mapping & Community Engagement Subcommittee Timeline



# Task Force Members Deliverable & Timeline

**Process:** Identify how agencies currently integrate environmental justice into their work & areas for improvement to eventually make EJ a core guiding principle in agency work. Discuss propositions for EJ with agency heads to get feedback & insight for final recommendations.

**Deliverable:** Recommendations for how to integrate environmental justice as a core guiding principle in agency work. Provide agency-specific recommendations when appropriate.

