

# COVID-19 JOINT INFORMATION CENTER COMMUNITY ENGAGEMENT TASK FORCE (CETF)

## Mission Statement

### Why & What:

The CETF exists to provide **timely, accurate, culturally and linguistically appropriate,** and **community-centric** information and resources to vulnerable, marginalized, and most impacted communities statewide.

### How:

By using a racial equity and social justice lens, we:

- Collaborate with state and local communities, organizations, and partners to **listen, engage, and respond** to immediate and longer term needs of the communities we serve.
- Engage communities both directly and through partnership, as appropriate.
- Use best practices from health promotion and education to create communication strategy and education tools.

## Commitment to Equity and Structural Change

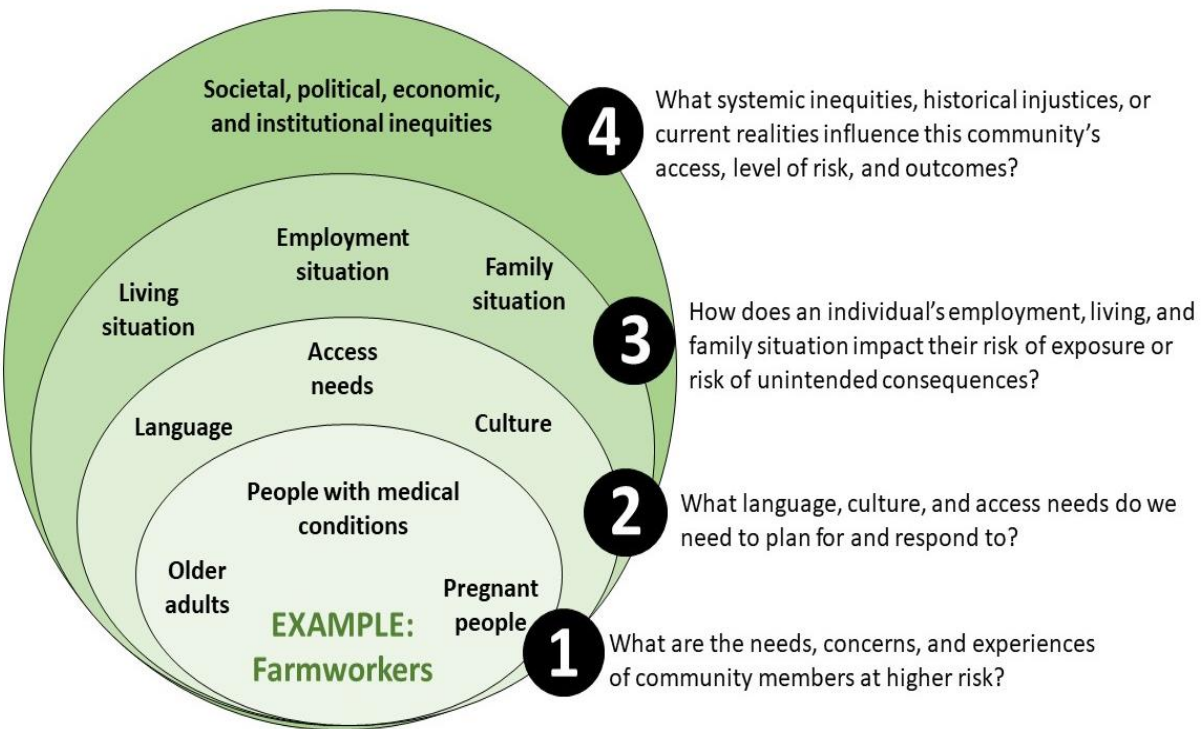
We lead our work with an equity and racial justice lens to transform underlying systems and structures. We focus on communities disproportionately impacted by:

- COVID-19's **health impact**.
- **Historic and current systemic inequities**.
- Increased **risk of exposure, economic impact**, or other unintended consequences of the response due to one's **employment situation**.
- Increased risk of exposure or unintended consequences of the response due to one's **living** and **family** situation.
- Increased risk of **unintended health consequences** from the response's efforts.

## Current Priorities

1. Communities with limited English proficiency
2. Disability community
3. Immigrant and refugee communities
4. Farm and agricultural workers
5. Communities of color
6. Individuals who are incarcerated or detained

*\*We acknowledge the historical injustices and persistent inequities impacting Native American/indigenous peoples, including urban Indians. We respond to the needs of tribal communities by working directly with the DOH Tribal Liaison and by honoring the Government-to-Government relationship between Tribal Nations and the state.*



## How we Approach our Work

We take a cross-cutting and intersectional approach to our work. We draw upon what we hear and learn from communities directly to inform our communication, response strategy, and efforts.



## Current Team Structure

MEMBER	KEY FOCUS AREA / PRIORITY COMMUNITY	COMMENTS
<b>Marissa Floyd</b>	<ul style="list-style-type: none"> <li>Older adults</li> <li>People with underlying medical conditions</li> </ul>	Partners with social marketing campaign lead (Laura)
<b>Tomas Madrigal</b>	<ul style="list-style-type: none"> <li>Immigrant &amp; refugee</li> <li>Limited English Proficiency (LEP)</li> <li>Farm and agricultural workers</li> </ul>	Overlap with Latinx community; partnering with UWSPH and UWPNASH
<b>Christymarie Jackson</b>	<ul style="list-style-type: none"> <li>Disability community</li> <li>African American/Black</li> <li>Youth</li> </ul>	Still figuring out role with DSHS re: disability community; partnering with UWSPH

	<ul style="list-style-type: none"> <li>• Key support for community outreach contracts</li> </ul>	
<b>Perla Gamboa</b>	<ul style="list-style-type: none"> <li>• Multi-lingual media lead</li> <li>• Essential workers</li> <li>• Latinx</li> <li>• Limited English Proficiency (LEP)</li> </ul>	Overlap with immigrant and refugee communities; L&I Language Access Plan lead
<b>Evette Jasper</b>	<ul style="list-style-type: none"> <li>• Pregnant people</li> <li>• LGBTQ</li> <li>• Equity and cultural humility review</li> <li>• Trauma-informed/healing-centered lens</li> </ul>	
<b>Christy Hoff</b>	<ul style="list-style-type: none"> <li>• Data equity liaison</li> <li>• Policy support (incarcerated &amp; farmworker)</li> <li>• Language Access Plan co-lead</li> <li>• Equity and cultural humility review</li> </ul>	In partnership with Katie Meehan and Paj Nandi; supporting Paj with state testing and contact tracing strategy
<b>Tara Bostock</b>	<ul style="list-style-type: none"> <li>• Health communications lead</li> </ul>	Partners with DOH C4PA and web teams as needed; partners with Katie on multi-lingual needs
<b>Megan Mikkelsen</b>	<ul style="list-style-type: none"> <li>• DOH Guidance lead</li> </ul>	Partners with health promotion, equity review, and web teams; partners with Health communications lead (Tara)
<b>Laura Blaske</b>	<ul style="list-style-type: none"> <li>• Social marketing campaign lead</li> </ul>	Partners with other JIC leads, agency partners, LHJs and DOH team
<b>Erin Lopez</b>	<ul style="list-style-type: none"> <li>• Community outreach contracts</li> <li>• Business community</li> <li>• Liaison to JIC Economic Resiliency Team</li> </ul>	Works closely with Katie Meehan
<b>Bella Mendez</b>	<ul style="list-style-type: none"> <li>• Community outreach contracts</li> <li>• DOH Language Access Plan lead</li> </ul>	
<b>Katie Meehan</b>	<ul style="list-style-type: none"> <li>• Language access system lead</li> <li>• Community outreach contracts lead</li> <li>• Collaborates with CETF leads re: overall direction &amp; strategy</li> </ul>	Partners with Governor's Office, State HR, DES, and cabinet agencies
<b>Danny Kenneweg</b>	<ul style="list-style-type: none"> <li>• CETF co-lead and operations support</li> <li>• Health promotion team lead/liaison</li> <li>• Liaison with JIC Director/leadership</li> </ul>	
<b>Paj Nandi</b>	<ul style="list-style-type: none"> <li>• CETF co-lead; overall strategy/leadership &amp; operations support</li> <li>• Primary POC for DOH exec/agency leadership and external partners</li> <li>• Equity liaison: state testing/contact tracing efforts and SEOC advance planning team</li> </ul>	Works with Secretary of Health and other leaders on ongoing community relations requests and concerns

Contact: [doh-cetf@doh.wa.gov](mailto:doh-cetf@doh.wa.gov)